

Charts on Chartres



*If you enjoy a good chart, you'll be happy with Charts on Chartres.
These mittens are inspired by one of the most emblematic gothic cathedral in France :
Chartres Cathedral, where one can find some of the most complex and exquisite [stained glass](#).
The Chartres Cathedral is part of Unesco's World Heritage since 1979.*

Sizes

Size will mostly depend on the weight of your yarn. For size Medium (8,5 in.), choose a yarn with a 19-20 sts / 4 in. For size Large (9,5 in.), select a yarn with a 17-18 sts / 4 in. Sown in M, knit with a 19 sts / 4 in. yarn.

Keep in mind that colorwork knitting tends to tighten your tension and knitted fabric.

Yarn

The original Chartres mittens were knit with Phildar's *Quiétude* (98 yd / 1.76 oz.)

- 2 skeins MC (Black)
- 1 skein CC (Iris)

(These quantities should be enough for any given yarn and size.)

Needles and Notions

For size M: One set of DPN size 4 (3.5 mm) for ribbing and another set of DPN size 5 (4.0 mm) for hand and thumb.

For size L: One set of DPN size 5 (4.0 mm) for ribbing and another set of DPN size 6 (4.5 mm) for hand and thumb.

Adjust size of needles for correct gauge.

Waste yarn or safety pin.

Stitch markers if wanted.



*Oh my!
The mitre of the bishop just grew a thumb.*

Gauge

Size M [L]: 26 [23] sts = 4 in. in colorwork stockinette stitch.

Explanations

Cuff

With smaller needles, cast on 54 sts using MC and distribute evenly on dpn. (13 and 14 stitches if you work with 5 needles or 18 if you work with a set of 4.)

Knit in the round (be careful not to twist!) in k1, p1 ribbing for 2 in. (or desired length).

Add a stitch marker (if wanted) on the first stitch of the round.

Hand

With larger needles, knit one round in MC.

Start knitting using chart (below) reading each round from right to left.

For right mitten, on the 14th round of chart, k1, place 10 sts on waste yarn or safety pin. Knit through the rest of the round. On the 15th round of chart, k1, cast on 10. Continue chart knitting.

For the left mitten, on the 14th round of chart, k16, place 10 sts on waste yarn or safety pin. Knit through the rest of the round. On the 15th round of chart, k16, cast on 10. Continue chart knitting.

Finger Tip

Starting on the 41st round of chart, decrease on each round as following:

k1, ssk, k until last 3 sts before opposite side, k2tog, k2, ssk, k until last 3 sts before end of round, k2tog, k1.

When there's only 10 sts of MC left, break yarn and graft sides together.



*Complex yet simple colorwork to knit.
Trust me; I was inspired by a cathedral!*

Thumb

Put the 10 live sts on needle. With MC, knit sts from right to left, mitten facing you. Pick up 10 sts.

Knit one round.

Round 2: K8, K2tog, K8, K2tog. 18 sts remain.

Knit until desired length.

K2tog throughout round. 9 sts remain.

Knit one round.

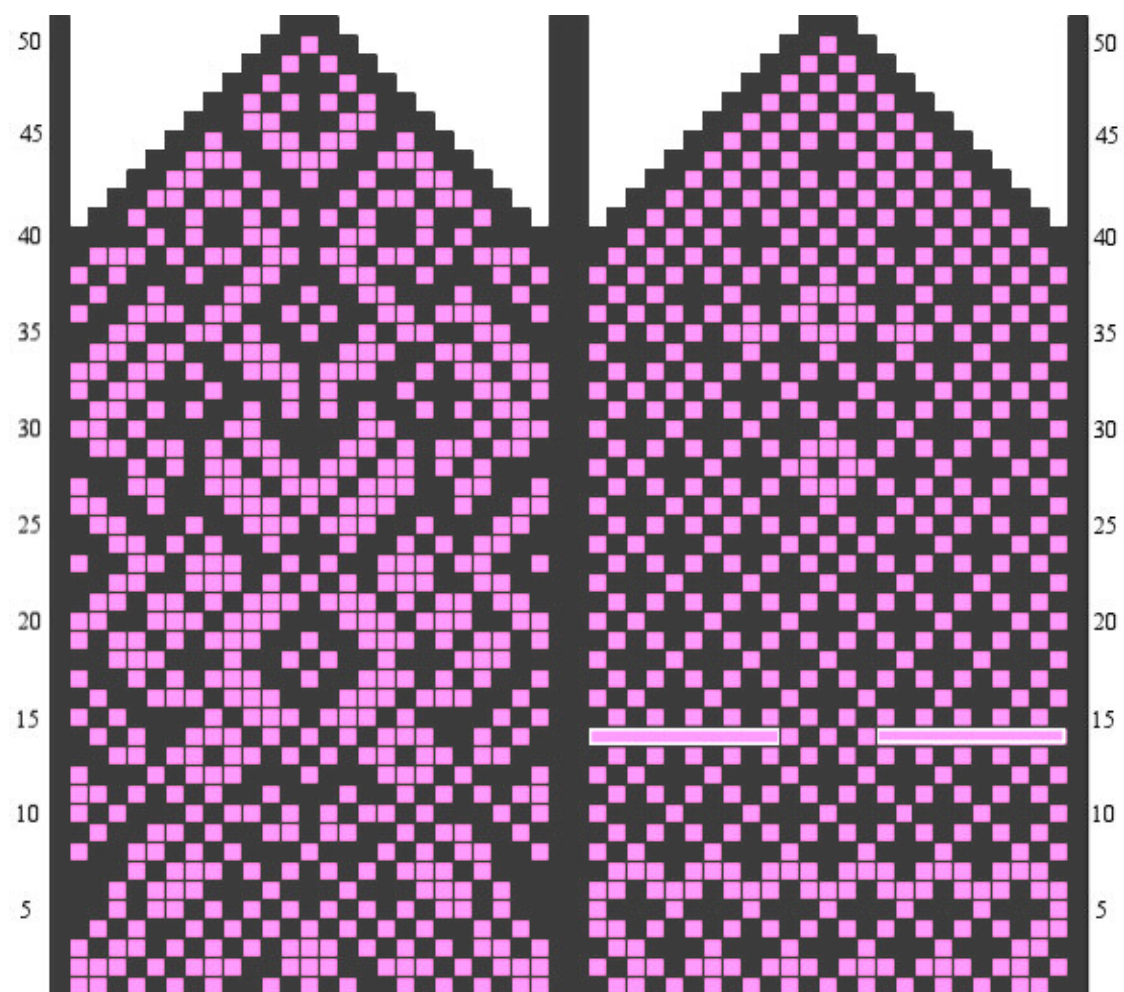
K2tog four times, k1. 5 sts remain.

Break and draw yarn through remaining sts.

Sew gap between thumb and hand.

Weave all ends.

Chart



Design by Marie Sauvagnac for [Pièce Montée](#), 2008
under [Free Art License](#)